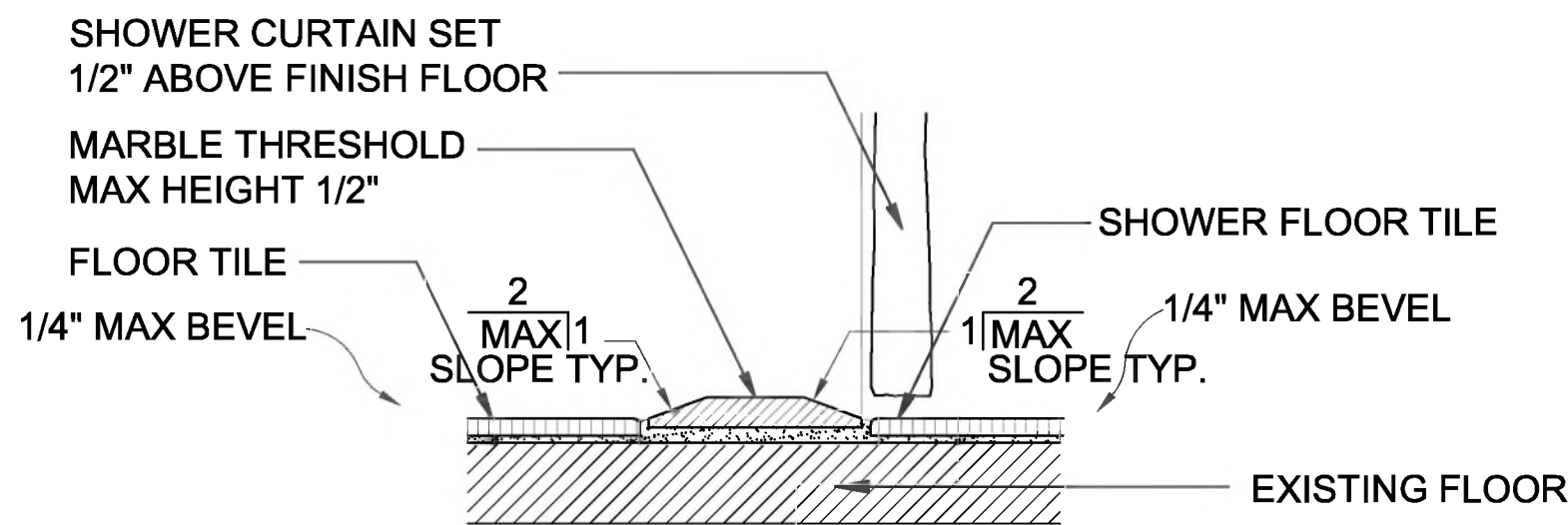
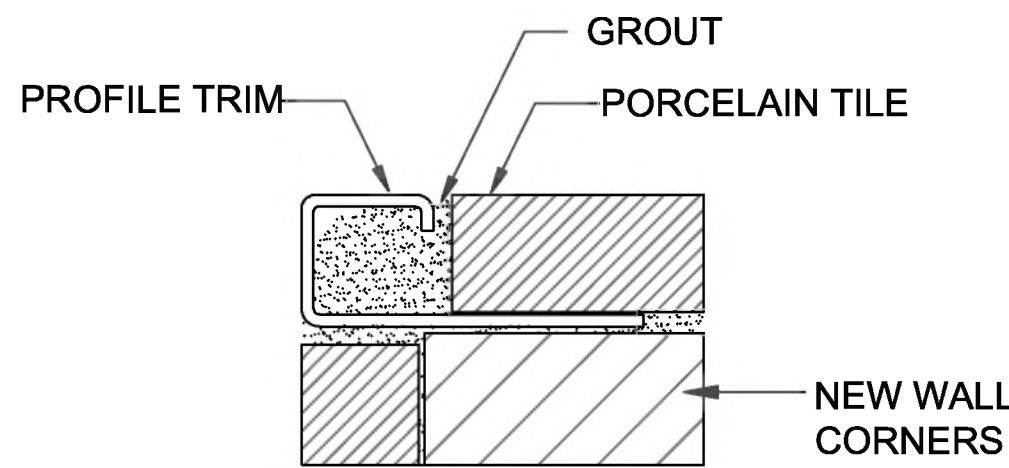


SHEET NOTES:

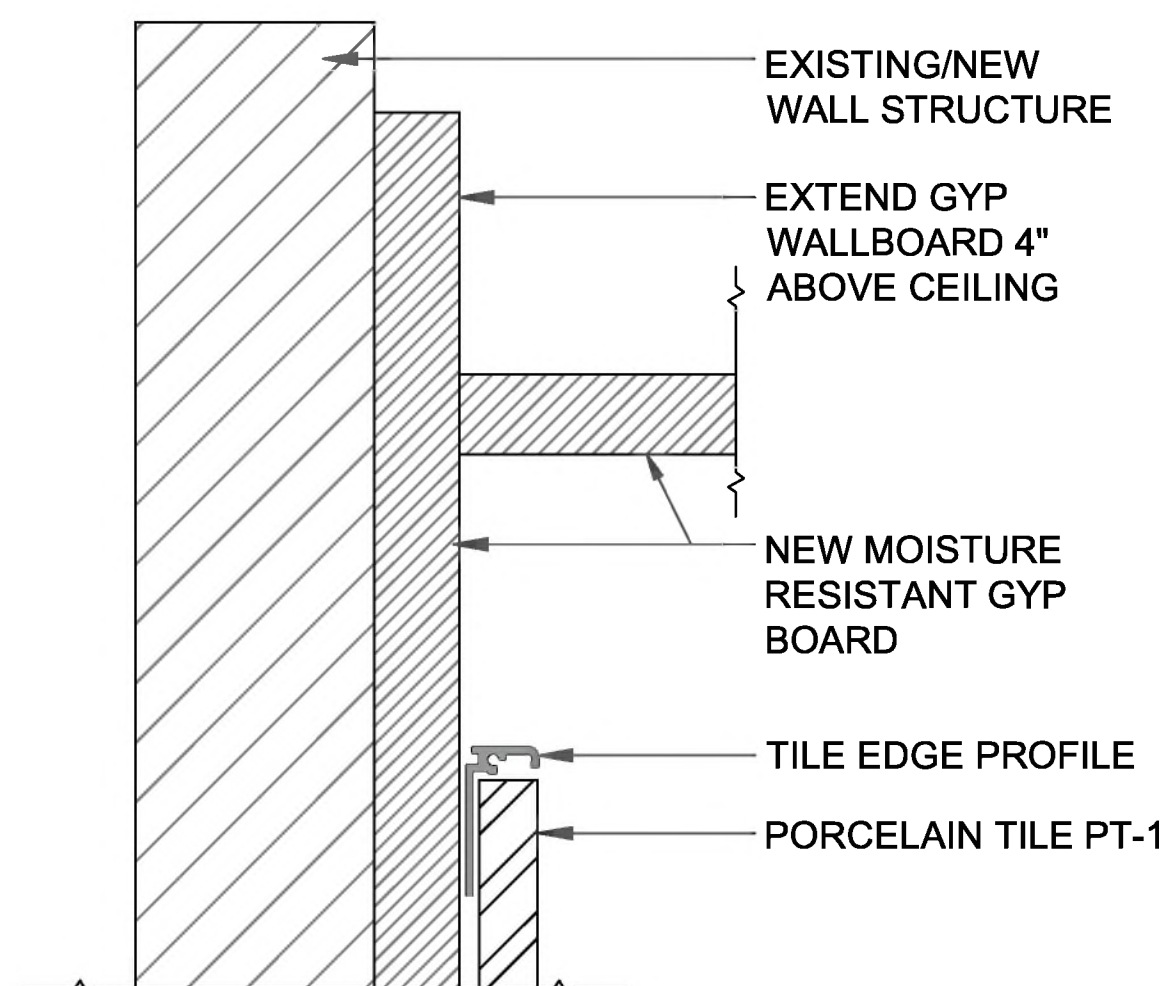
1. THIS SHEET APPLIES TO BID ALTERNATE G-1.



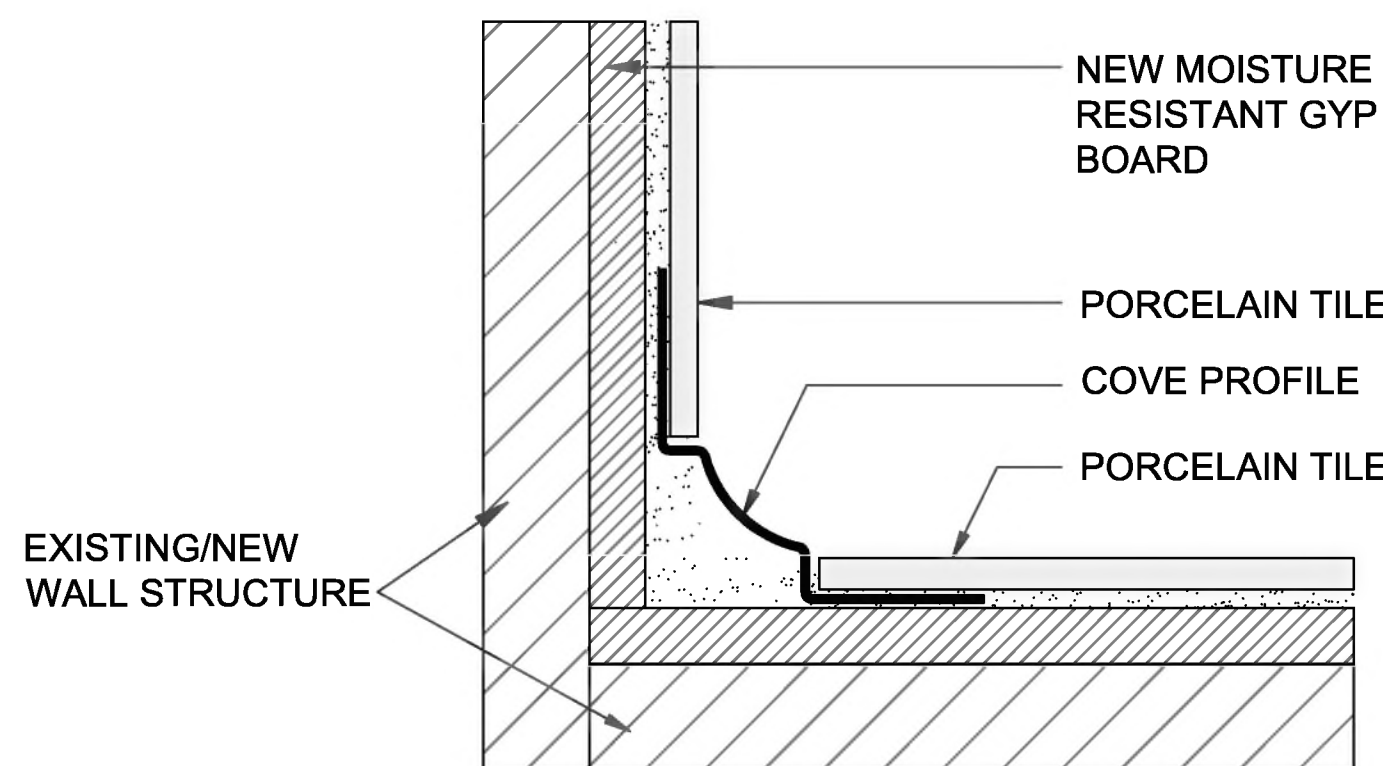
1 THRESHOLD AT SHOWER DETAIL
A-112 NTS



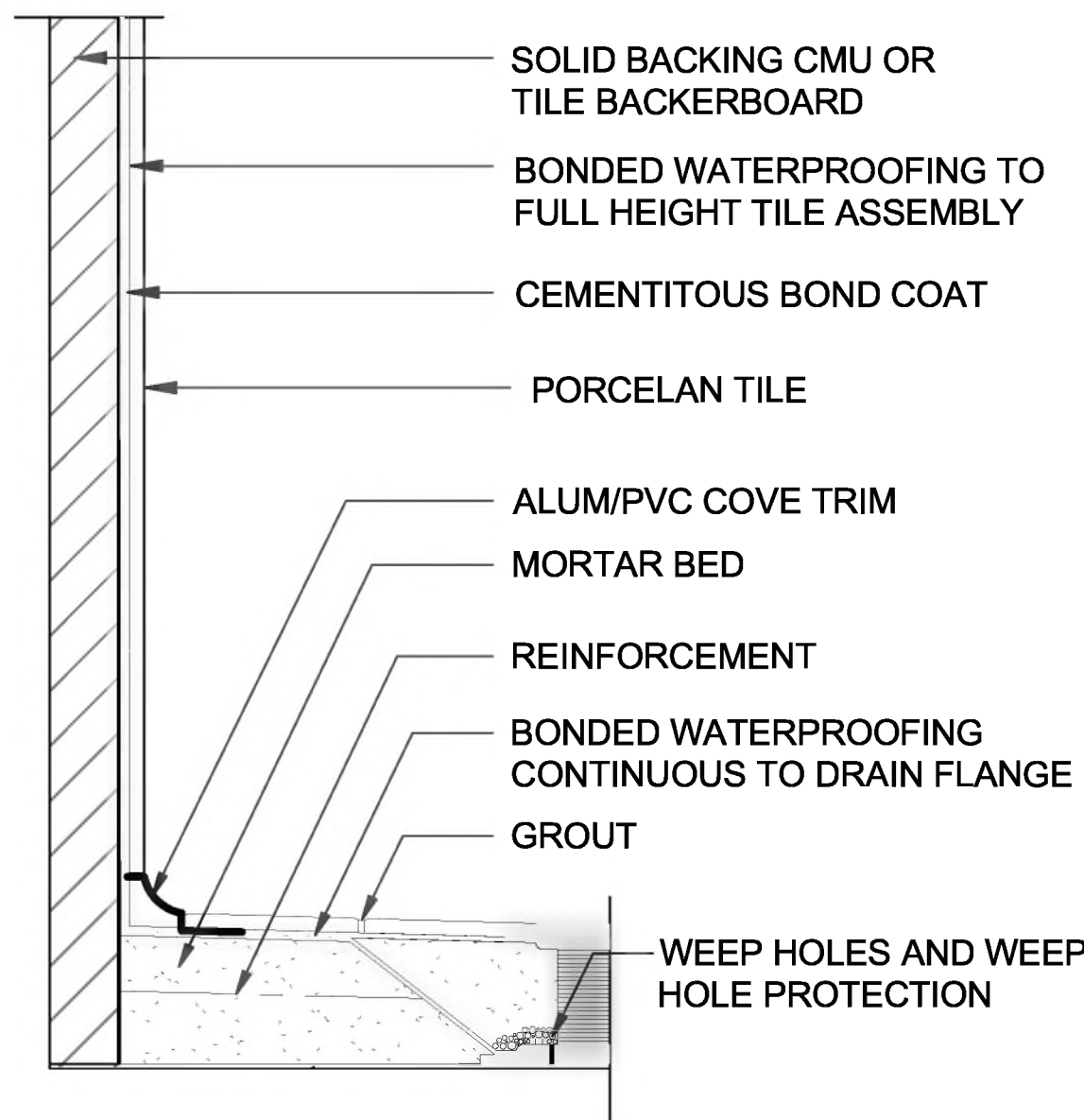
2 90° OUTSIDE CORNER ROFILE - PR-2
A-112 NTS



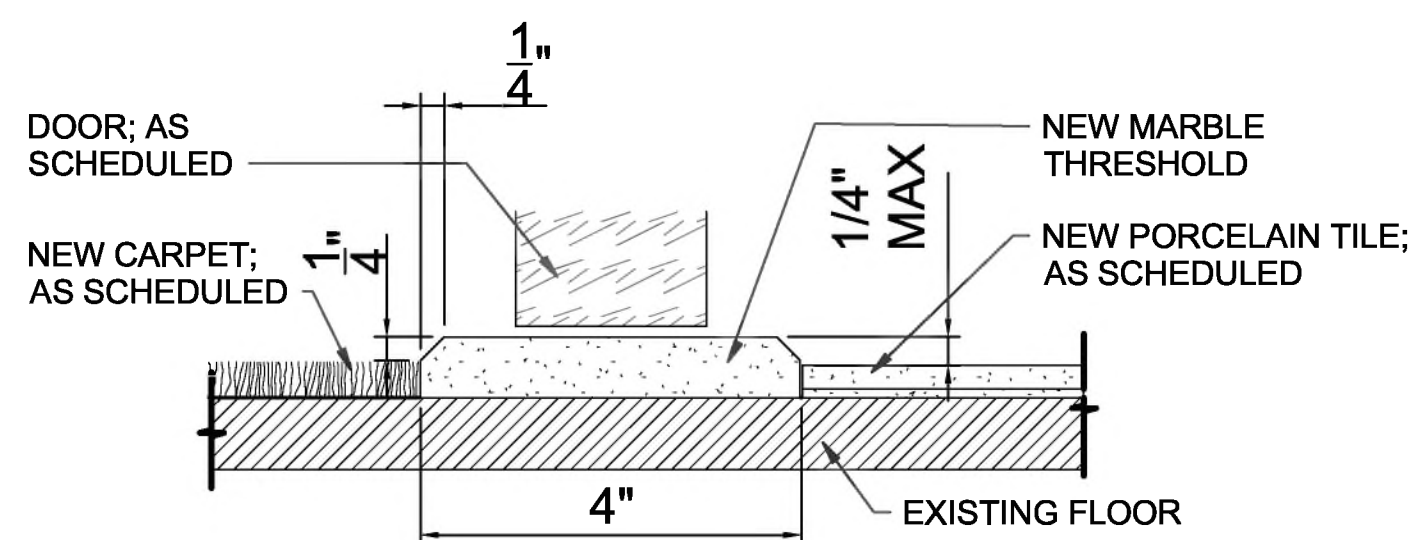
3 WALL/CEILING & EDGE PROFILE DETAIL
A-112 NTS



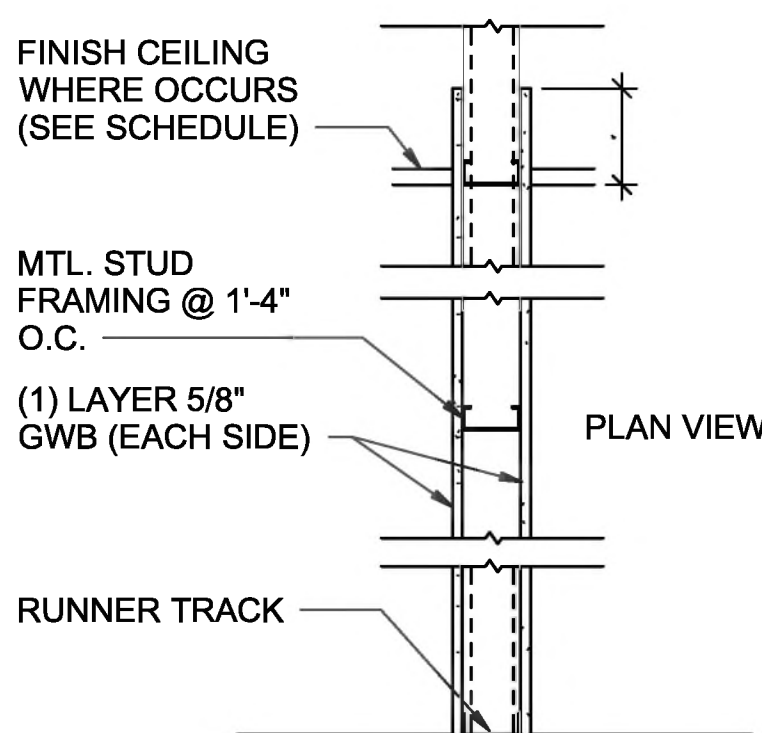
6 INSIDE CORNER COVE FLOORS/WALLS
A-112 NTS



7 SHOWER FLOOR DRAIN DETAIL
A-112 SCALE: NTS

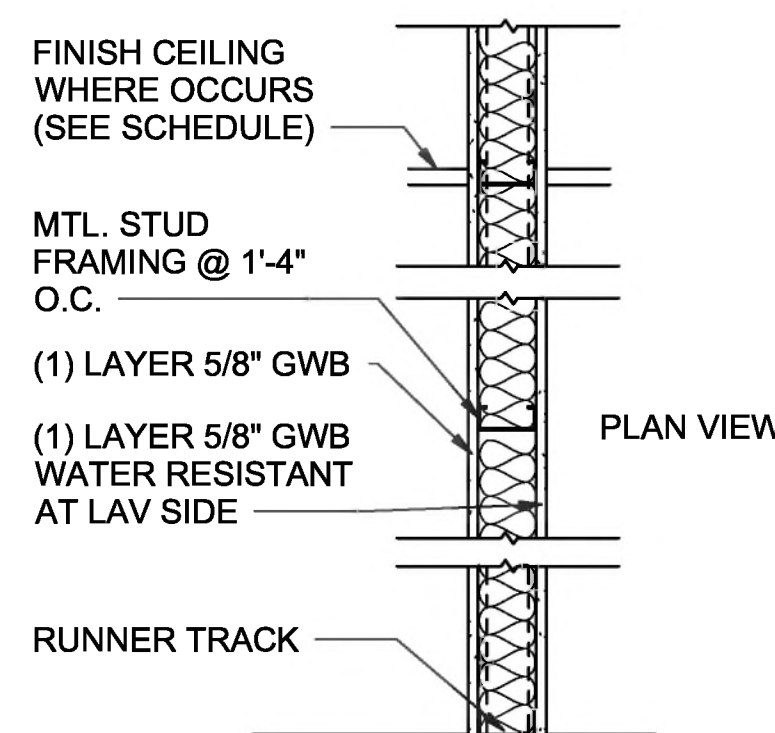


5 MARBLE TRANSITION TILE TO CARPET
A-112 SCALE: NTS



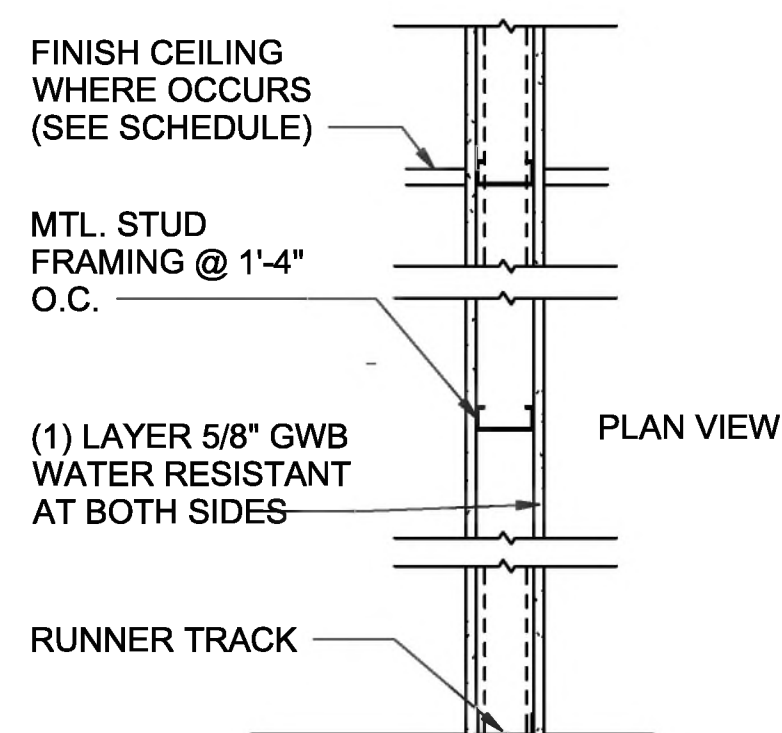
A 3 5/8" MTL. STUD PARTITION
SCALE: 1" = 1'-0"

NOTES:
1. EXTEND STUDS TO UNDERSIDE OF DECK STRUCTURE. GWB TO 6" ABOVE CEILING.
2. TILE FINISH ON LAV SIDE OF PARTITION - SEE FINISH SCHEDULE AND TILE SPECIFICATIONS



B 5 5/8" MTL. STUD PARTITION
SCALE: 1" = 1'-0"

NOTES:
1. EXTEND TOTAL PARTITION TO UNDERSIDE OF DECK STRUCTURE.
2. TILE FINISH ON BATHROOM SIDE OF PARTITION - SEE FINISH SCHEDULE AND TILE SPECIFICATIONS
3. FULL HEIGHT SOUND BATTS



C 5 5/8" MTL. STUD PARTITION
SCALE: 1" = 1'-0"

NOTES:
1. EXTEND TOTAL PARTITION TO UNDERSIDE OF DECK STRUCTURE.
2. TILE FINISH ON BOTH SIDES OF PARTITION - SEE FINISH SCHEDULE AND TILE SPECIFICATIONS

REVISIONS

RAYMOND
316 WEST MILLBROOK ROAD, SUITE 201
RALEIGH, NC 27604
OFFICE: (919) 872-7866
WWW.RAYMONDGLOBAL.COM
LICENSE #3143 COAF C4282

PREPARED FOR:
NC DEPARTMENT
OF INSTRUCTION
SCO #
24-27792-01A

GOVERNOR MOREHEAD SCHOOL
SPRINKLER, ADA TOILET, LIGHTING
UPGRADES FOR DORMS A, B, & D
RALEIGH, NC

CONTENTS:

DETAILS

DATE:
05/27/2025
FOR
CONSTRUCTION
DESIGNER:
ENGINEER:

SHEET NO.

A-112

OF

